

# Duquesne University **Economic Impact Report**

## **Mission Statement**

Duquesne University of the Holy Spirit is a Catholic University, founded by members of the Congregation of the Holy Spirit, the Spiritans, and sustained through a partnership of laity and religious. Duquesne serves God by serving students—through commitment to excellence in liberal and professional education, through profound concern for moral and spiritual values, through the maintenance of an ecumenical atmosphere open to diversity, and through service to the Church, the community, the nation, and the world.



**WWW.DUQ.EDU**





## Message from the President



Our founders and sponsors, the Congregation of the Holy Spirit, teach us that our destiny is bound to that of our neighbors. That truth is inseparable from our identity as a Catholic institution of higher learning and the world's only Spiritan university.

For more than 130 years, we have maintained a steadfast commitment to education, service and social responsibility. Over our history, this University has also been a force for economic growth.

In this report, we highlight examples of the economic impact Duquesne provides currently—more than \$432 million in fiscal year 2009. These resources are helping to invigorate the immediate neighborhood, support the larger community and strengthen the local economy, all of which ensure that our city and region will continue to excel and inspire.

Duquesne University is honored to have this important part in shaping Pittsburgh's economic future, and we are pleased to share this Economic Impact Report with you.

Charles J. Dougherty, Ph.D.  
President

# Our Role

## In the Region's Economic Vitality:

Duquesne University's impact on the regional economy began in 1878 when our founders and sponsors, priests and brothers of the order of the Congregation of the Holy Spirit, established a mission to teach the children of immigrants. Over the years our importance in the local economy has increased steadily, and today Duquesne plays an essential part in this region's economic well-being and future prosperity.

**In fiscal year 2009, Duquesne University boosted the regional economy with a total financial impact of more than \$432 million.**

### As an employer...

- We provided jobs for over 2,800 people—a **total payroll of more than \$150 million.**

### As a community partner...

- We provided assistance to the community that improves quality of life and bolsters economic vitality.

### As a purchaser...

- We bought nearly \$69 million in goods and services from local businesses
- and invested over \$18 million in new construction and capital improvements.



# Financial Impact Snapshot

**In fiscal year 2009, Duquesne boosted the regional economy with a total financial impact of more than \$432 million.**

## Employment

- Employed more than 2,800 people in professional, technical and clerical fields, making us one of Pittsburgh's larger employers.
- Increased total payroll to more than \$150 million, producing more than \$164 million in direct and indirect financial impact to our region.

## Purchasing

- Purchased nearly \$69 million in goods and services directly from local businesses.
- Invested over \$18 million in new construction and capital improvement projects, which supported 167 local jobs in the building trades.



## Spending

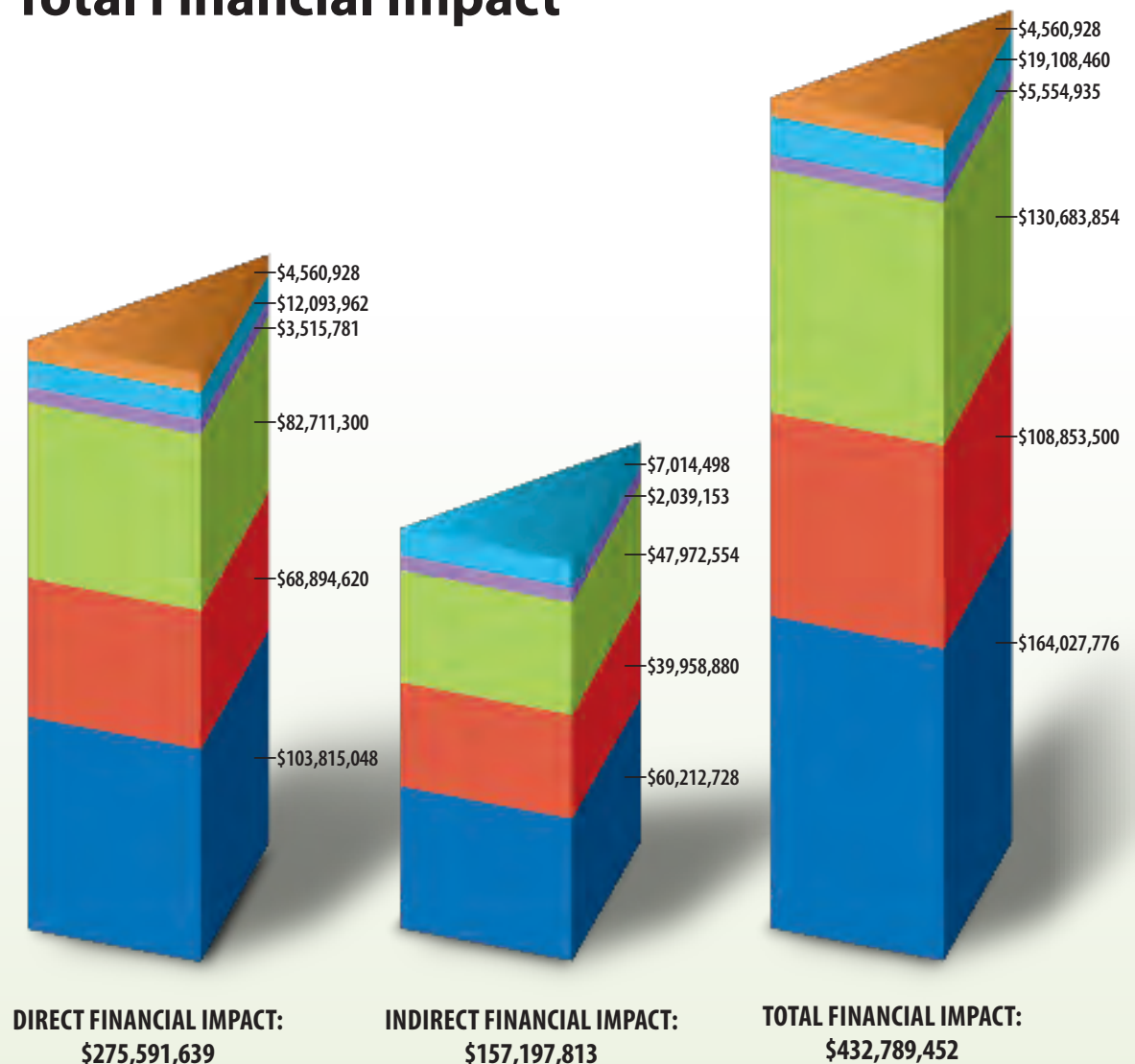
- Enrolled over 10,000 students who had direct and indirect financial impact in the area totaling more than \$130 million.
- Attracted thousands of visitors to campus whose spending had a total financial impact of more than \$5 million in the region.

## Service

- Coordinated thousands of hours of volunteer efforts that have a total estimated dollar value of over \$4 million.
- Provided comprehensive management and technical assistance to 815 local small businesses—over 11,000 hours of consulting at no cost—and secured more than \$12 million in financing that helped to create 50 new businesses.
- Attracted more than \$12 million in research funds for projects in health care and other vital areas.

# \$432,789,452

## Total Financial Impact



Volunteering,  
Service-Learning  
and Donations

Duquesne Small Business  
Development Center

Student Spending

University Purchasing

Employee Wages



# Buying and Spending Locally

## Purchasing

In fiscal year 2009, Duquesne University purchased \$68,894,620 in goods and services from local vendors and suppliers. For each dollar spent locally, economists estimate that 58 cents continues to ripple through as vendors and suppliers apply their receivables toward operating costs, salary and other expenses. That makes the total local financial impact of Duquesne's spending \$108,853,500.

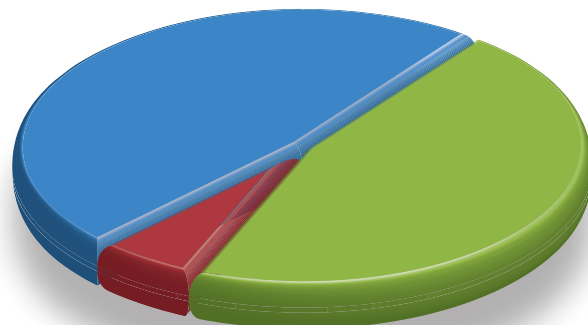
**\$108 million**  
financial impact of local purchasing

## Taxes and Other Payments

Duquesne University pays a variety of taxes to Pittsburgh and Allegheny County. In fiscal year 2009, Duquesne contributed more than \$1 million in Parking and Amusement Taxes, and in the same period paid real estate taxes for leased property directly to the city and county.

**Taxes and Other Payments:**  
**\$2,037,145**

- **Taxes paid** to City of Pittsburgh and Allegheny County
- **Local taxes withheld** from wages
- **Other** payments and contributions



Duquesne University has also made PILOT (Payment In Lieu of Taxes) contributions to both the City of Pittsburgh and to the Allegheny County Urban Redevelopment Authority (URA). Duquesne is one of 73 not-for-profit organizations that contributed to the initial efforts of the Pittsburgh Public Service Fund. Over the three-year term of the agreement with the city (2005–2007), the Public Service Fund contributed a total of \$13,987,780, which is \$419,095 higher than the amount originally pledged.

Our employees are also paying their share of local taxes. Duquesne employees had nearly \$1 million withheld from their paychecks for Employee Wage Tax (for Pittsburgh residents) and Local Service Tax (for those living outside the city).

Additionally, our campus is a self-contained community. Annual costs for necessities such as street maintenance and snow removal are absorbed by Duquesne. In addition, the University funds its own well-equipped and highly trained police force. We are one of only three colleges and universities in Pennsylvania to have a Department of Public Safety that is fully accredited by the Pennsylvania Chiefs of Police Association.

This means that our officers are authorized to enforce any and all state and city laws. Campus police are able to work closely with the Pittsburgh Police, thus providing for the safety and security of the campus and increasing the effectiveness of local law enforcement efforts in the surrounding area.

*Matt Maurice, a 13-year employee, is one of several full-time painters who work for Duquesne.*



**\$164 million**  
local impact of employee wages

## Employment

Duquesne University has 2,816 full-time and part-time employees, who earned wages and benefits totaling \$150,575,252. The wages we pay our employees are the cornerstone of prosperity for them and their families as well as for regional businesses and other institutions.

When our employees take home their pay, much of it re-enters the local economy through purchases, investments and charitable contributions. The businesses our employees patronize receive money that enables them to pay their own employees, who, in turn, spend their wages in the community. So for every \$1 paid in wages and

benefits to our employees, economists estimate that another 58 cents circulates through the regional economy.

That makes the direct and indirect financial impact of the wages and benefits to Duquesne employees more than \$164 million.

A portion of the wages our employees earn is paid in taxes to local governments. Duquesne's economic impact, however, goes far beyond the local economy. State income tax and sales tax paid by Duquesne employees contribute millions of dollars to Pennsylvania for building infrastructure, providing education for our children and promoting tourism.



## Student Spending

Duquesne University attracts students from across the United States and more than 80 foreign nations. In fiscal year 2009, Duquesne enrolled 10,160 students: 5,710 undergraduates, 3,743 graduates and 707 law students.

The purchasing power of those students is important for the region's businesses. In fiscal year 2009 they spent nearly \$82,711,300 locally, which (using the 58 cents on the dollar multiplier) yields a total financial impact of \$130,683,854.

**\$130 million**  
financial impact of student spending

Students pay local taxes, too. Some 65 percent of our students—nearly all of our graduate students and many of our undergraduate students—live off campus. This means that either through the rent they pay to landlords or through direct payments if they or their families are homeowners, these students are contributing property taxes to Pittsburgh and local municipalities.

The University does everything in its power to help its students, who in turn will continue its mission to serve the greater good. In fiscal year 2009, Duquesne provided more than \$60 million in University-based financial aid, money that is making a quality education more affordable for students of diverse socio-economic backgrounds.



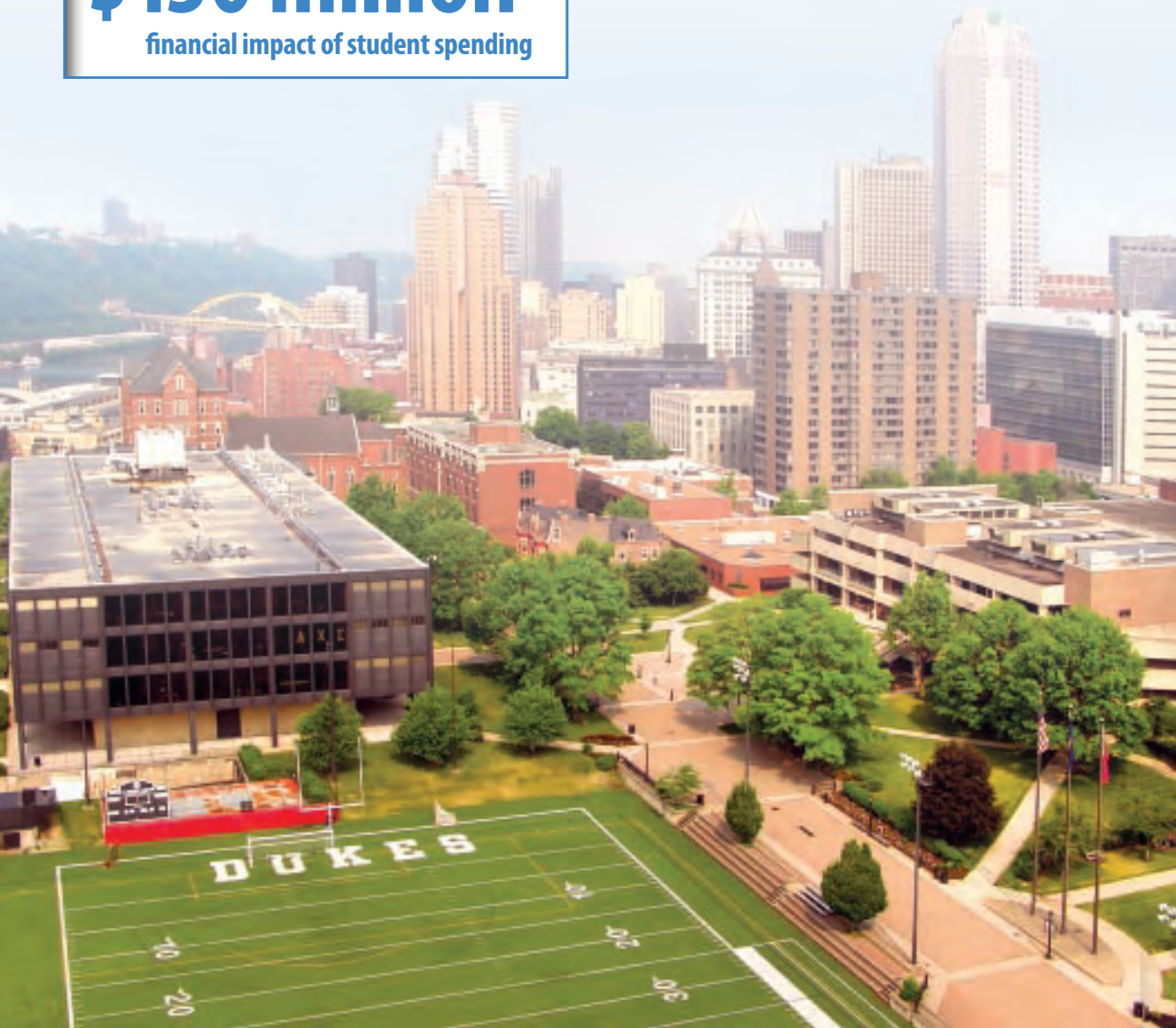
## The Impact of Our Alumni

It is well documented that higher education is a community's most effective hedge against unemployment and poverty. In addition to contributing more to tax revenues, college graduates need social safety-net programs far less often.

So, as Duquesne University contributes to our region's economic vitality through purchasing and wages, it does so, too, simply by virtue of the fact that our graduates are making their contributions to the region's economic health.

The vast majority of Duquesne University's alumni lives and works in Western Pennsylvania, and our graduates are leaders in their communities. They are improving life here daily, not only through their professional expertise, but also through the high ethical standards and concern for human dignity that form the core of a Duquesne University education.

It is well documented that **higher education is a community's hedge against unemployment and poverty.**





# Serving the Community

Community service is a vital part of the Duquesne University experience for all members of the campus community, and efforts to serve have a measurable impact on the economic health of our community. The combined financial impact of University-related volunteering, service-learning projects and other donations was \$4,560,928.

## Volunteering

In fiscal year 2009, 8,058 students and employees donated their time and talent to Duquesne-affiliated groups, nonprofit organizations and faith-based programs throughout the Pittsburgh region. A network of volunteers, organized by the Duquesne University Volunteers (DUV) office and Duquesne's Spiritan Campus Ministry, logged 209,883 hours of service. The work performed by our students and faculty volunteers is estimated to have had a financial impact of \$4,250,131.\*

**\$4 million**  
financial impact of volunteering

## Service-Learning

Service-learning, which combines community service with academic course work, is part of the curriculum for every Duquesne student. In 2009, 1,279 students were engaged in service-learning activities in 45 classes. The projects—which range from developing strategic plans for small businesses to collecting oral histories—are designed to accomplish the goals of our partners in community agencies and our learning objectives for students. Not only does service-learning embody the core values of the Congregation of the Holy Spirit, the religious order that founded the University, but this new approach to education provided 15,348 hours of community service with an economic impact of \$310,797.\*

\*Applying the accepted multiplier of \$20.25 per hour for volunteer work.

Students and employees volunteer annually for University-sponsored neighborhood cleanup efforts.



## Charitable Donations

Duquesne students raised \$123,149 and provided in-kind contributions of food, clothing, educational supplies and other items for a variety of charitable causes in fiscal year 2009, making the total amount of donations \$138,000. Employees and students also donated \$71,306 to the United Way of Allegheny County.

## Resource Sharing

Faculty and students donate their knowledge and skills in a wide variety of programs that provide free assistance where it is needed most in our community. The School of Nursing's Nurse Managed Wellness Center (NMWC) and the Community Enterprise Clinic (CEC) are two examples.

The NMWC administers diet, medication management, health screening and educational programs in senior housing and other sites throughout the city. Nursing faculty members coordinate the efforts of volunteers, including retired nurses and student nurses from Duquesne, who are helping Pittsburgh's older adults, particularly those with modest incomes, live healthier, more independent lives.



Dr. Lenore Resick (right), director of the Nurse Managed Wellness Center, consults with a client at K. Leroy Irvis Tower in Pittsburgh's Hill District neighborhood.

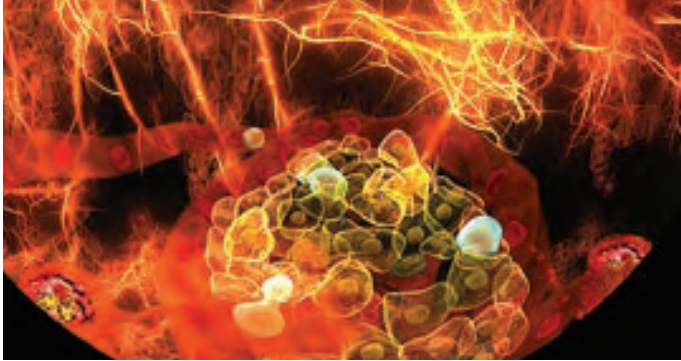
The CEC provides pro bono legal assistance to neighborhood and regional community development groups, as well as to a wide range of other nonprofit organizations, the majority of which are located in Allegheny County. The CEC also assists a number of groups in surrounding counties and across the state.



Freshmen in the College of Liberal Arts take course work that connects the classroom with the community through public service. Here, a group of first-year students is shown in the warehouse of Pittsburgh's Brother's Brother Foundation, where the students helped assemble medical kits shipped to needy people around the globe.



# Research



Research is an important way of attracting external funding that supports employment at the University. Our faculty members are making great strides in the treatment of disease and undertaking research projects that may change the way we deal with a variety of problems in fields such as education, the environment and law enforcement.

To date, 14 researchers at Duquesne have collectively received more than \$3.25 million in funding from the National Institutes of Health (NIH), the National Science Foundation (NSF) and Allegheny County through the American Recovery & Reinvestment Act of 2009 (ARRA), more commonly known as the stimulus package. This money is provided to support and advance important research throughout the University for projects related to drug addiction, Parkinson's and Alzheimer's diseases, autism, mental retardation and cancer, as well as many other issues that are important to science and society.

### Grants by Source and Year

Duquesne has increased its research grant funding, and many of the projects funded have the potential to translate into economic activity.

	FY 2005	FY 2006	FY 2007	FY 2008	FY 2009
Federal and State	\$5,490,690	\$5,935,484	\$6,706,853	\$8,004,227	\$7,975,699
Corporate and Foundation	\$3,556,524	\$4,641,648	\$4,215,837	\$5,264,166	\$4,217,053
Total	\$9,047,214	\$10,577,132	\$10,922,690	\$13,268,393	\$12,192,752

### Research That Helps People

Though our primary mission is teaching, Duquesne University supports a wide range of research. We take particular pride in research projects undertaken by our faculty and students that focus on critical public health issues or seek to improve the quality of life for vulnerable populations.

The University holds 43 patents, with 22 more in process. Recent patents for research at Duquesne include the one issued to Dr. Partha Basu, assistant professor of chemistry and biochemistry. He headed a team, which included student researchers, that landed a patent for a process to detect the presence of lead in water. Dr. David Lapinsky, assistant professor of medicinal chemistry in the Mylan School of Pharmacy, received a patent in 2009 for a compound that may help in the prevention and treatment of cancer in humans and animals.

Another Duquesne researcher, Dr. Jeffrey Evanseck, holder of the Lauritis Chair of Teaching and Technology and a professor of chemistry, is helping to wage the fight against drug-resistant bacteria. His project, which is funded by the National Institutes of Health (NIH), aims to disarm microorganisms and spare the 19,000 lives lost each year to antibiotic-resistant infections.

Other faculty members have received funding for a wide range of beneficial research work, including a project that gives adults with autism a chance to improve their lives, a project that helps children understand regenerative medicine and a project that may provide a prescription to fight addiction.

Dr. Tomislav Pintauer (right), assistant professor of chemistry and biochemistry at Duquesne University, recently received a National Science Foundation (NSF) grant to make chemical reactions more environmentally friendly. With him is Candice Thornton, a student assisting him with the project, which will explore ways to reduce the amount of certain chemicals to an environmentally friendly level, providing a "greener" way to make pharmaceuticals and industrial compounds.



### Helping Children and their Families Understand Regenerative Medicine

Associate professor in biology John Pollock's Regenerative Medicine Partnership in Education helps youngsters' and the general public's understanding of health science advances in stem cell biology and regenerative medicine.

The project, funded by the National Institutes of Health, established a unique partnership in scientific, medical and ethics education, bringing together researchers and medical experts, clinicians, science center experts, multi-media film industry leaders, ethicists, students and educators representing all levels.

*Our Cells, Our Selves*, a film produced by the project, provides children and their families with an understanding of how the body protects itself from its environment and presents the evolutionary basis of the immune system and juvenile diabetes in a way that children can understand. To accompany the movie, the Regenerative Medicine Partnership in Education team developed free, interactive Web pages, teacher/ student workbooks and learning tools for the classroom and homeschoolers.

### Stretching Dollars for Adults with Autism

According to the state chapter of the Autism Society of America, an estimated 74,000 Pennsylvanians, most of them adults, have autism, and their unemployment rate soars as high as 90 percent. Financial support for community-based employment after public education or the age of 21 is nonexistent.

The St. Anthony School Program at Duquesne University collaborates with faculty researcher Dr. Ann Huang to improve the lives of young adults who suffer with autism.

Huang developed a program that incorporates vocational assessment and training, work-related social skills and employer and co-worker training to help higher-functioning people with autism lead productive lives. Her program yields great impact with relatively little funding. With a total grant of \$160,000 for 18 months, Huang has served 19 students with autism from a local charter school, as well as the St. Anthony Program at Duquesne. In the summer of 2008, all four graduating participants landed part- or full-time jobs.

### Collaborating to Fight Addiction

Three researchers at Duquesne have received separate grants from the National Institutes of Health (NIH) totaling more than \$2 million to collaborate in the fight against addictive psychostimulant drugs, such as cocaine and methamphetamine.

The National Institute on Drug Abuse has described an anti-psychostimulant drug as the Holy Grail in the fight against addiction. While heroin addicts can use methadone or buprenorphine to ease withdrawal symptoms, nothing comparable is available to the estimated 2 million cocaine users nationwide or the growing number of people addicted to methamphetamine.

Pharmacologist Dr. Christopher K. Surratt, division head of pharmaceutical sciences; medicinal chemist Dr. David J. Lapinsky; and computational chemist Dr. Jeffry Madura, chair of the chemistry department, will implement the grant in a unique, interdisciplinary plan that gives each a distinct research area but requires ongoing collaboration with the other two researchers.



# Helping Local Businesses

**Programs and centers at Duquesne contribute tens of thousands of hours per year to the economic vitality of our region, resulting in untold value for clients receiving a wide range of services and support.**

## Small Business Development Center

In the past year, the Duquesne University Small Business Development Center (SBDC) provided consulting and management services to 815 local small business owners and entrepreneurs, totaling 11,159 hours of assistance at no charge. In addition, the SBDC secured \$12,093,962 in loans and grants to help these small businesses grow. In fiscal year 2009, an estimated 50 companies got a start as a direct result of assistance from Duquesne's SBDC.

**\$12 million**  
loans and grants for  
local small businesses

## Small Business Development Center—Adding Value to Our Community

- Provides technical and management assistance to small businesses in Southwestern Pennsylvania
- Offers consulting services, international business-operations training and assistance with environmental issues
- Hosts two large conferences annually—the Pennsylvania Business Technology Conference and the Entrepreneur's Growth Conference
- Operates the Mexico USAID Ties partnership to increase trade between Pennsylvania and the Mexican states of Aguascalientes and Jalisco



## MBA Sustainability

Aside from being recognized as one of the country's premier graduate business degrees in sustainability, Duquesne's MBA Sustainability contributed over 1,000 hours last year consulting with and completing projects for Pittsburgh-area businesses and nonprofits. If and when implemented, the results of those "green" consulting projects could, over time, yield millions of dollars in benefits to the local economy.

## Center for Competitive Workforce Development

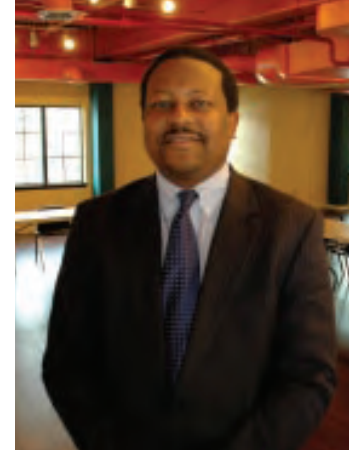
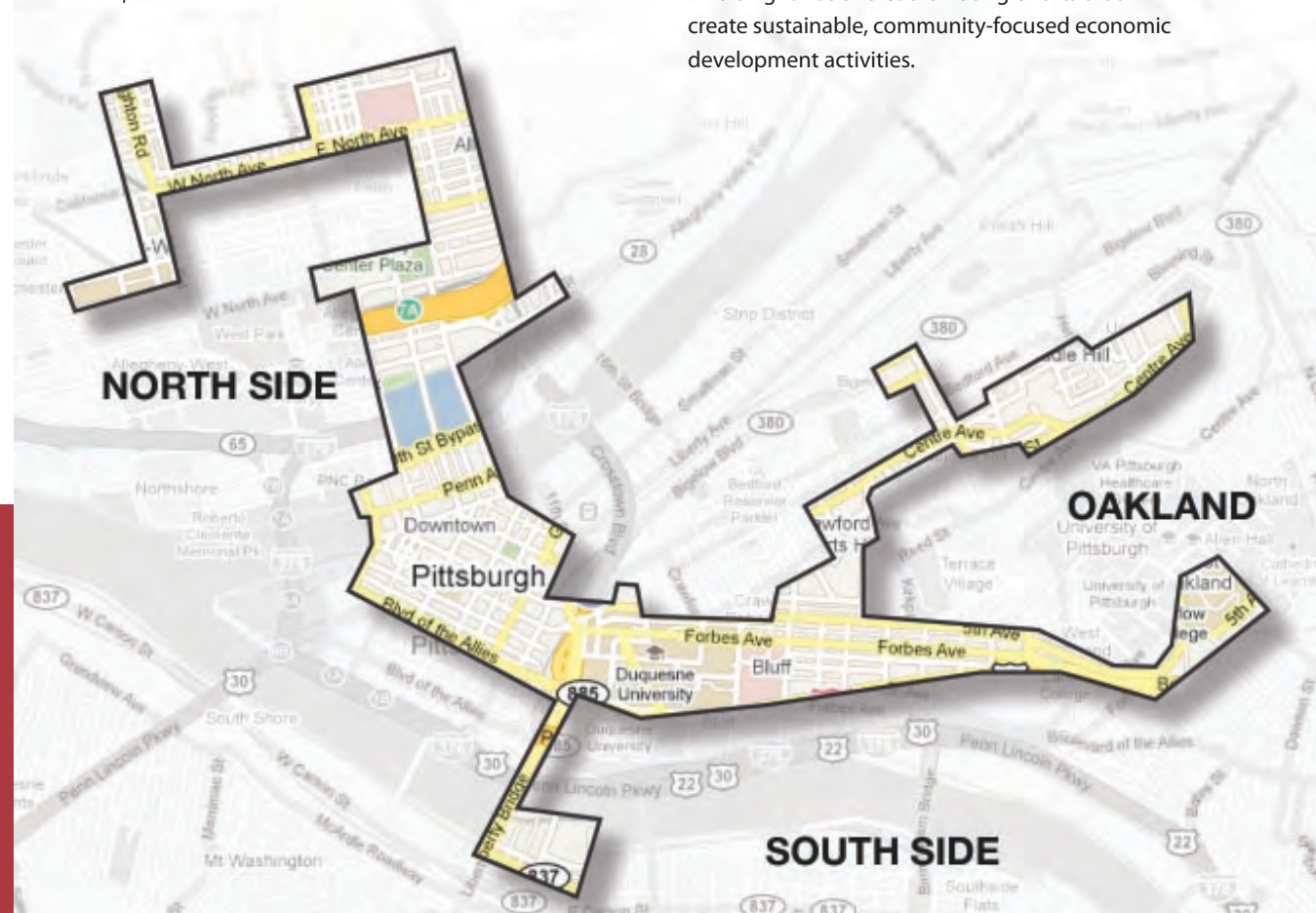
The Center for Competitive Workforce Development (CCWD) provided thousands of hours of assistance to diverse stakeholders in order to develop the region's workforce in ways that will have long-term effects. The CCWD helped to instruct more than 5,000 people in the past year through school mentorship programs in the inner city and industry partnerships in the region.

## Economic Impact on the Immediate Neighborhood

As a leading partner of the Pittsburgh Central Keystone Innovation Zone (PCKIZ), Duquesne University is helping to nurture our neighborhood and shape its growth through investment and economic development. PCKIZ, a consortium funded by state and private sources, aims to attract more businesses to the area, thus stimulating the economy and generating job growth in one of Pittsburgh's most financially distressed areas.

Since its inception in July 2007, PCKIZ has had a measurable effect on the local community, and is currently working with nearly 30 companies that either started in or relocated to PCKIZ's target zone.

*The geographic area covered by the PCKIZ spans Pittsburgh's North Side, Downtown, South Side, Uptown and the Hill District.*



*William O. Generett, Jr.,  
Executive Director,  
Pittsburgh Central  
Keystone Innovation Zone.*

The PCKIZ recently has been a star performer among organizations working to revitalize the city's center by:

- Helping young companies obtain more than \$1 million in funding.
- Achieving the second-highest total of dollars in tax credits among all of Pennsylvania's Innovation Zones. (Six of the 10 companies approved for tax credits received the maximum amount.)

Leveraging its initiatives with the needs of nonprofits in the area, PCKIZ has been instrumental in raising funds and coordinating efforts that create sustainable, community-focused economic development activities.



# Being a Good Neighbor

**Judging by our new buildings, the vitality of our campus and the new construction on surrounding city blocks, our neighborhood is attracting investment and poised to become a showcase—a revitalized and rejuvenated urban area.**

The quality of life for the people of Pittsburgh is critically important to us, and Duquesne University has teamed up with community groups to enhance and strengthen the neighborhoods that surround our campus. Students and University administrators work closely with organizations like the Hill District

Consensus Group, Uptown Community Action Group and South Side Community Council, to name a few, on everything from neighborhood cleanup campaigns to laying the groundwork for economic development.

## A Revitalized Forbes Corridor

Duquesne has beautified its portion of the Forbes Avenue corridor, an important traffic artery connecting Downtown to Oakland, making the street more attractive to businesses and local residents and complementing the construction of the new Penguins hockey arena and other local business.

## The New Power Center

The Power Center, Duquesne University's newest building, houses a restaurant, juice bar, coffee shop and bookstore. Revitalizing a significant area of the Forbes Avenue corridor, this new facility with its pedestrian skywalk has become a local landmark. It has also earned LEED (Leadership in Energy and Environmental Design) Silver Certification from the Green Building Council.

## A Greener Campus

Not only has our Power Center earned the Green Building Council's Silver LEED Certification, for a recent energy-efficient renovation the Duquesne Union received Gold LEED Certification. We have also decreased water consumption, increased the use of environmentally friendly products and begun recycling. Our Energy Center, which produces almost all of the University's electrical power from clean-burning natural gas, is an award-winning, nationally recognized co-generation facility that uses heat produced in the process to warm and cool the campus.

*The Power Center transformed a blighted area, dramatically improving the appearance and vitality of the Forbes Avenue corridor.*





## Our Shared Future

This publication summarizes Duquesne University's importance to the economic well-being of our city and region. Today, it is clear that the city's colleges and universities, along with health care services and high-tech research, are as vital for the region's prosperity as steel and manufacturing were in decades past.

Our region has enviable strengths, not the least of which is the strength of its institutions of higher learning. And as we look toward the future, it is our hope that this city will continue to be an attractive choice for students seeking a high-quality education.

As the facts presented in this report show, Duquesne University is making a significant contribution to our region's economic vitality and is an important reason why college-bound people choose Pittsburgh over other destinations. Our goal is to continue to be a key economic partner for Pittsburgh, Allegheny County and Western Pennsylvania.

### For further information, contact:

**Office of Public Affairs  
Duquesne University  
600 Forbes Ave.  
Pittsburgh, PA 15282  
412.396.6050**

